

MERITOR® BUS AND COACH BRAKE SHOE PACKAGE



MERITOR



IDEAS DRIVING RESULTS

COMPLETE OFFERING. TRUSTED SOURCE.



EXPERIENCE ONLY A LEADER CAN PROVIDE.



As a worldwide leader in braking to the commercial vehicle industry, Meritor knows what it takes to stop vehicles of every kind in every stopping environment. That's why our aftermarket brake package for bus and coach applications is one of the best offerings on the market today.

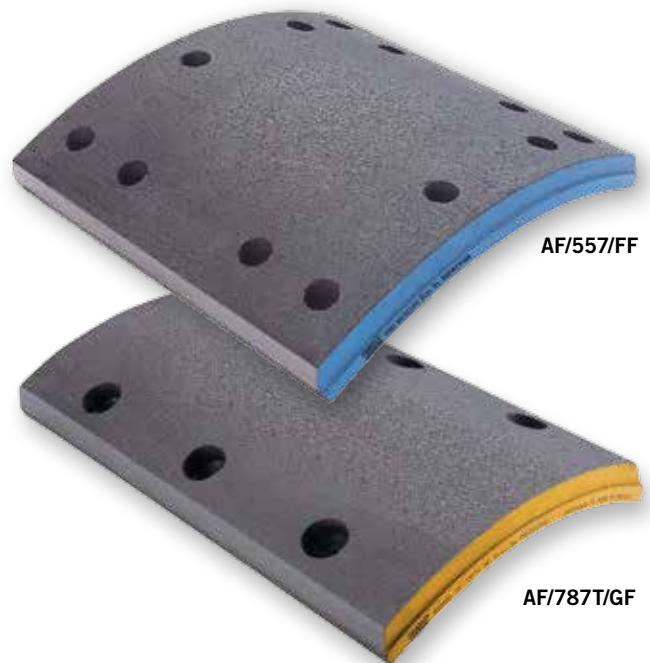
Our experience is world renowned. We supply more than two million production brake assemblies per year for trucks, trailers, buses and coaches in virtually every application for leading OEMs across North America and Europe. Our friction materials, shoes and supporting hardware are the result of many decades of proven engineering, scientific methodology and unyielding testing.

It's a level of knowledge and experience we've earned with pride. And it translates to a complete lineup of bus and coach products we're pleased to offer our customers, including brake shoes and brake shoe kits with high-performance friction materials.

Trusted Partner. Quality Friction.

Top bus and coach fleets know what it takes to stop their vehicles. With excessive stops-per-mile and potentially corrosive environments, fleets want a friction material they can trust.

For more than a decade, Meritor has been the exclusive North American distributor of Fras-le North America's heavy-duty brake lining. Since its entry into the North American market over 25 years ago, Fras-le has proven itself as a high-quality manufacturer. Meritor is proud to offer Fras-le brake block — friction designed for exceptional wear and reliability.





AF/557/FF STANDARD BUS AND COACH BLOCK

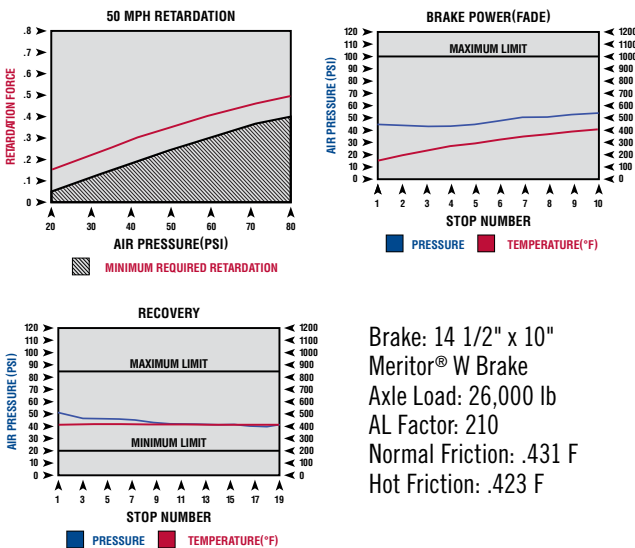
Performance Advantages

- Combines low cost per mile and safety
- Superior resistance to fade
- Exceptional drum compatibility
- Proven reliability and durability

Features and Benefits

- Superior all-around performance
- Minimizes maintenance and downtime
- Ideal for inter- and intra-city transit bus and coach use
- Proven over millions of miles of fleet service
- Medium- to high-friction asbestos-free lining
- High flexural strength virtually eliminates cracking
- Ideal for use with automatic slack adjusters
- Low swell and growth eliminate potential for wheel lockup
- Performance and wear data have been extensively evaluated
- Meets the inertial dynamometer requirement of the FMVSS 121
- Cadmium, lead, mercury, chromium and asbestos-free*

Typical Inertia Dynamometer Plot Test Parameters FMVSS 121 Brake Standard



AF/787T/GF ULTRA PREMIUM BUS AND COACH BLOCK

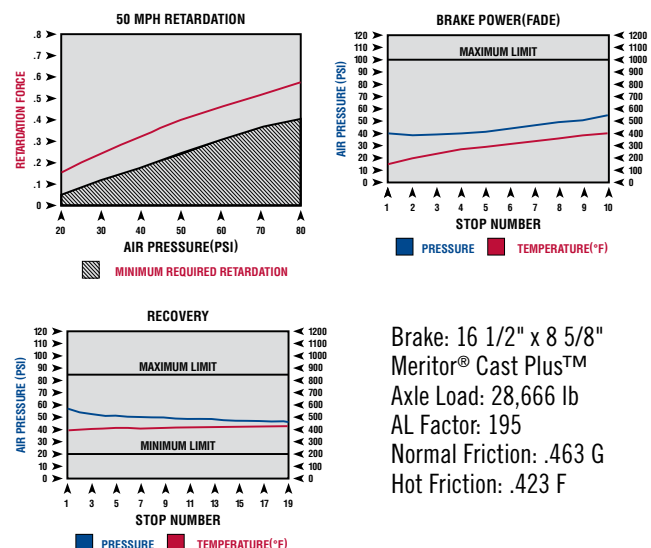
Performance Advantages

- Proven reliability and durability in transit bus applications
- Superior fade resistance for added safety
- Exceptional structural resistance to cracking
- Low drum wear for reduced maintenance
- Provides quiet braking for high customer satisfaction

Features and Benefits

- Superior all-around performance
- Minimizes maintenance and downtime
- Ideal for inter- and intra-city transit bus and coach use
- Works in both high- and low-floor applications
- Medium- to high-friction asbestos-free lining
- Excellent functionality with automatic slack adjusters
- Low swell and growth factors
- Extensive testing validates braking power, fade resistance and wear data
- Meets the inertial dynamometer requirement of the FMVSS 121 brake standard
- Cadmium, lead, mercury, chromium and asbestos-free*

Typical Inertia Dynamometer Plot Test Parameters FMVSS 121 Brake Standard



Fras-le Bus & Coach Brake Block Sets

Brake Application	Description		Fras-le Lining Mix	
	FMSI #	Block Thickness	AF557	AF787T
Meritor 14-1/2" x 6" W Brake	4228F	Standard	F5574228F	F787T4228F
Meritor 14-1/2" x 6" W Brake	4228F	.937 Thick	F5574228F937	—
Meritor 14-1/2" x 6" W Brake	4228F	.060 Oversized	F5574228FX	F787T4228FX
Meritor 14-1/2" x 6" W Brake	4228F	.120 Oversized	F5574228FXX	F787T4228FXX
Meritor 14-1/2" x 6" W Brake	4228F	.180 Oversized	F5574228FXXX	—
Meritor 14-1/2" x 5" W Brake	4398	Standard	F5574398	F787T4398
Meritor 14-1/2" x 5" W Brake	4398	.937 Thick	F5574398937	—
Meritor 14-1/2" x 5" W Brake	4398	.060 Oversized	F5574398X	F787T4398X
Meritor 14-1/2" x 5" W Brake	4398	.120 Oversized	F5574398XX	F787T4398XX
Meritor 14-1/2" x 5" W Brake	4398	.180 Oversized	F5574398XXX	—
Meritor 14-1/2" x 8" W Brake	4541C	Standard	F5574541C	F787T4541C
Meritor 14-1/2" x 8" W Brake	4541C	.060 Oversized	F5574541CX	F787T4541CX
Meritor 14-1/2" x 8" W Brake	4541C	.120 Oversized	F5574541CXX	F787T4541CXX
Meritor 14-1/2" x 8" W Brake	4541C	.180 Oversized	F5574541CXXX	—
Meritor 16-1/2" x 4" P or Q Brake	4549C	Standard	F5574549C	F787T4549C
Meritor 16-1/2" x 4" P or Q Brake	4549C	.060 Oversized	—	F787T4549CX
Meritor 16-1/2" x 4" P or Q Brake	4549C	.120 Oversized	—	F787T4549CXX
Meritor 14-1/2" x 10" W Brake	4592A	Standard	F5574592A	F787T4592A
Meritor 14-1/2" x 10" W Brake	4592A	.937 Thick	F5574592A937	—
Meritor 14-1/2" x 10" W Brake	4592A	.060 Oversized	F5574592AX	F787T4592AX
Meritor 14-1/2" x 10" W Brake	4592A	.120 Oversized	F5574592AXX	F787T4592AXX
Meritor 14-1/2" x 10" W Brake	4592A	.180 Oversized	F5574592AXXX	—
Meritor 16-1/2" x 8" P or Q Brake	4644A	Standard	F5574644A	—
Mercedes 410 mm x 160 mm Brake	4656	Standard	F5574656	F787T4656
Mercedes 410 mm x 160 mm Brake	4656	.060 Oversized	F5574656X	F787T4656X
Mercedes 410 mm x 160 mm Brake	4656	.120 Oversized	F5574656XX	F787T4656XX
Mercedes 410 mm x 160 mm Brake	4656	.180 Oversized	F5574656XXX	—
Mercedes 410 mm x 220 mm Brake	4657	Standard	F5574657	F787T4657
Mercedes 410 mm x 220 mm Brake	4657	.060 Oversized	F5574657X	F787T4657X
Mercedes 410 mm x 220 mm Brake	4657	.120 Oversized	F5574657XX	F787T4657XX
Mercedes 410 mm x 220 mm Brake	4657	.180 Oversized	F5574657XXX	—
Meritor 15" x 4" Q Plus Brake	4702	Standard	F5574702	F787T4702
Meritor 16-1/2" x 7" Q Plus Brake	4707	Standard	F5574707	F787T4707
Meritor 16-1/2" x 6" Cast Plus Brake	4715A	.933 Thick	F5574715A	—
Meritor 16-1/2" x 6" Cast Plus Brake	4715A	Standard	F5574715AS	F787T4715AS
Meritor 16-1/2" x 6" Cast Plus Brake	4715A	.060 Oversized	F5574715ASX	F787T4715ASX
Meritor 16-1/2" x 6" Cast Plus Brake	4715A	.120 Oversized	F5574715ASXX	F787T4715ASXX
Meritor 16-1/2" x 8-5/8" Cast Plus Brake	4728	.933 Thick	F5574728	—
Meritor 16-1/2" x 8-5/8" Cast Plus Brake	4728	Standard	F5574728S	F787T4728S
Meritor 16-1/2" x 8-5/8" Cast Plus Brake	4728	.060 Oversized	F5574728SX	F787T4728SX
Meritor 16-1/2" x 8-5/8" Cast Plus Brake	4728	.120 Oversized	F5574728SXX	F787T4728SXX



Choose the Right Friction.

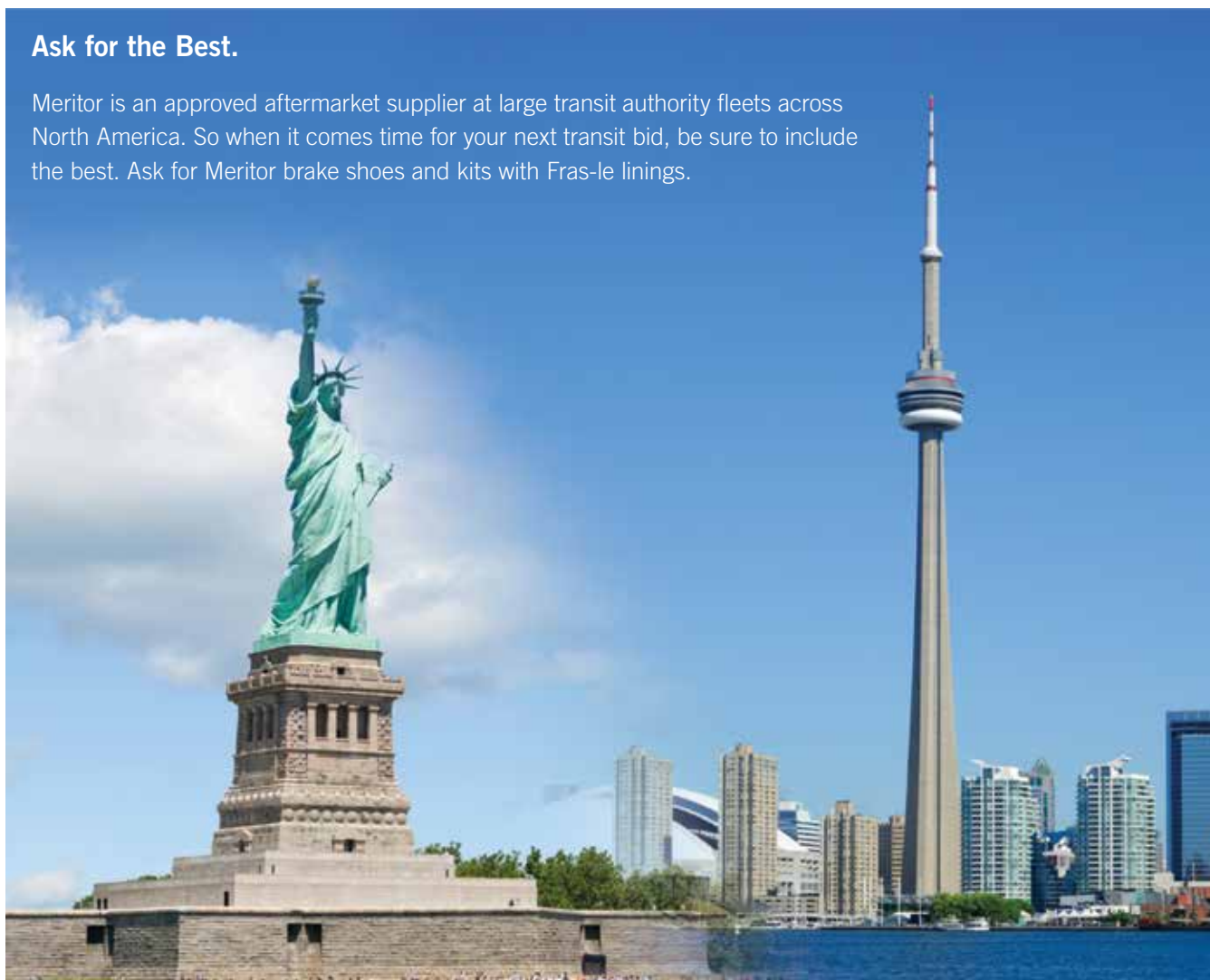
When choosing friction material for your fleet, it is important to ensure you are spec'ing the right formulation for your vehicles and application environment. Fras-le utilizes a combination of market-proven quality ingredients to achieve the highest level of vehicle braking performance and life. Fras-le brake block has been developed with specific friction material formulations to meet the demanding stop-and-go requirements of the bus and coach vocation. Not every friction is developed with the same attention to detail. Be sure you're getting the right friction to meet your fleet's needs.

Fras-le Friction	AF557	AF787T
Category	Special Application	Special Application
Description	Transit Standard	Transit Premium
GAWR Rating	26K	28K
AL Factor	210 AL	195 AL

Competitors	AF557	AF787T
Abex	6028(ED) 6133 (MQ)	—
Armada	AR5	—
BrakePro	CM29	—
Carlisle	WT56	—
Haldex/Midland	GP2030	—
Marathon	TS KVT	—
Stemco Duroline	UltraP FT UltraP BRT	—

Ask for the Best.

Meritor is an approved aftermarket supplier at large transit authority fleets across North America. So when it comes time for your next transit bid, be sure to include the best. Ask for Meritor brake shoes and kits with Fras-le linings.



Meritor New Lined Bus & Coach Brake Shoes & Brake Shoe Kits With Fras-Ie Lining

Brake Application	Description				Fras-Ie Lining Mix	
	FMSI #	Block Thickness	Part Description	Includes Hardware Kit	AF557	AF787T
Meritor 14-1/2 x 6" W	4228F	Standard	Shoe Box Kit	KIT6004	—	KSF787T4228W
Meritor 14-1/2 x 6" W	4228F	.060 Oversize	Single Shoe	—	—	SF787T4228WX
Meritor 14-1/2 x 6" W	4228F	.060 Oversize	Single Shoe	—	SF5574228WX	—
Meritor 14-1/2 x 6" W	4228F	.120 Oversize	Single Shoe	—	—	SF787T4228WXX
Meritor 14-1/2 x 6" W	4228F	Standard	Single Shoe	—	—	SF787T4228W
Meritor 14-1/2 x 6" W	4228F	Standard	Single Shoe	—	SF5574228W	—
Meritor 14-1/2 x 6" W	4228F	.060 Oversize	Two Shoes	—	—	S2F787T4228WX
Meritor 14-1/2 x 6" W	4228F	.120 Oversize	Two Shoes	—	—	S2F787T4228WXX
Meritor 14-1/2 x 6" W	4228F	Standard	Two Shoes	—	—	S2F787T4228W
Meritor 14-1/2 x 6" W	4228F	Standard	Two Shoes	—	S2F5574228T	—
Meritor 14-1/2 x 5" W	4398	Standard	Shoe Box Kit	KIT6009	—	KSF787T4398W
Meritor 14-1/2 x 5" W	4398	.060 Oversize	Single Shoe	—	—	SF787T4398WX
Meritor 14-1/2 x 5" W	4398	.120 Oversize	Single Shoe	—	—	SF787T4398WXX
Meritor 14-1/2 x 5" W	4398	Standard	Single Shoe	—	—	SF787T4398W
Meritor 14-1/2 x 5" W	4398	Standard	Single Shoe	—	SF5574398W	—
Meritor 14-1/2 x 5" W	4398	.060 Oversize	Two Shoes	—	—	S2F787T4398WX
Meritor 14-1/2 x 5" W	4398	.120 Oversize	Two Shoes	—	—	S2F787T4398WXX
Meritor 14-1/2 x 5" W	4398	Standard	Two Shoes	—	—	S2F787T4398W
Meritor 14-1/2 x 8" W	4541C	Standard	Shoe Box Kit	KIT6005	—	KSF787T4541W
Meritor 14-1/2 x 8" W	4541C	Standard	Single Shoe	—	SF5574541W	—
Meritor 14-1/2 x 8" W	4541C	.060 Oversize	Two Shoes	—	—	S2F787T4541WX
Meritor 14-1/2 x 8" W	4541C	.120 Oversize	Two Shoes	—	—	S2F787T4541WXX
Meritor 14-1/2 x 8" W	4541C	Standard	Two Shoes	—	—	S2F787T4541W
Meritor 14-1/2 x 10" W2	4592A	Standard	Shoe Box Kit	KIT6003	—	KSF787T4592W2
Meritor 14-1/2 x 10" W2	4592A	.060 Oversize	Single Shoe	—	—	SF787T4592W2AX
Meritor 14-1/2 x 10" W2	4592A	.060 Oversize	Single Shoe	—	SF5574592W2X	—
Meritor 14-1/2 x 10" W2	4592A	.120 Oversize	Single Shoe	—	—	SF787T4592W2AXX
Meritor 14-1/2 x 10" W2	4592A	.120 Oversize	Single Shoe	—	SF5574592W2XX	—
Meritor 14-1/2 x 10" W2	4592A	Standard	Single Shoe	—	—	SF787T4592W2A
Meritor 14-1/2 x 10" W2	4592A	Standard	Single Shoe	—	SF5574592W2	—
Meritor 14-1/2 x 10" W2	4592A	.060 Oversize	Two Shoes	—	—	S2F787T4592W2X
Meritor 14-1/2 x 10" W2	4592A	.060 Oversize	Two Shoes	—	S2F5574592W2X	—
Meritor 14-1/2 x 10" W2	4592A	.120 Oversize	Two Shoes	—	—	S2F787T4592W2XX
Meritor 14-1/2 x 10" W2	4592A	.120 Oversize	Two Shoes	—	S2F5574592W2XX	—
Meritor 14-1/2 x 10" W2	4592A	Standard	Two Shoes	—	—	S2F787T4592W2
Meritor 14-1/2 x 10" W2	4592A	Standard	Two Shoes	—	S2F5574592W2	—
Meritor 14-1/2 x 10" W3	4592A	Standard	Shoe Box Kit	KIT6008	—	KSF787T4592W3
Meritor 14-1/2 x 10" W3	4592A	.060 Oversize	Single Shoe	—	—	SF787T4592W3AX
Meritor 14-1/2 x 10" W3	4592A	.120 Oversize	Single Shoe	—	—	SF787T4592W3AXX
Meritor 14-1/2 x 10" W3	4592A	Standard	Single Shoe	—	—	SF787T4592W3A
Meritor 14-1/2 x 10" W3	4592A	Standard	Single Shoe	—	SF5574592W3	—
Meritor 14-1/2 x 10" W3	4592A	.060 Oversize	Two Shoes	—	—	S2F787T4592W3X
Meritor 14-1/2 x 10" W3	4592A	.120 Oversize	Two Shoes	—	—	S2F787T4592W3XX
Meritor 14-1/2 x 10" W3	4592A	Standard	Two Shoes	—	—	S2F787T4592W3
Meritor 14-1/2 x 10" W3	4592A	Standard	Two Shoes	—	S2F5574592W3	—
Meritor 15-1/8 x 6" RDC Wedge	4690	.060 Oversize	Two Shoes	—	—	S2F787T4690RDBX
Meritor 15-1/8 x 6" RDC Wedge	4690	.120 Oversize	Two Shoes	—	—	S2F787T4690RDBXX



Meritor New Lined Bus & Coach Brake Shoes & Brake Shoe Kits With Fras-le Lining

Brake Application	FMSI #	Description			Fras-le Lining Mix	
		Block Thickness	Part Description	Includes Hardware Kit	AF557	AF787T
Meritor 15-1/8 x 6" RDC Wedge	4690	Standard	Two Shoes	—	—	S2F787T4690RDB
Meritor 15-1/8 x 10" RDC Wedge	4691	.060 Oversize	Two Shoes	—	—	S2F787T4691RDBX
Meritor 15-1/8 x 10" RDC Wedge	4691	.120 Oversize	Two Shoes	—	—	S2F787T4691RDBXX
Meritor 15-1/8 x 10" RDC Wedge	4691	Standard	Two Shoes	—	—	S2F787T4691RDB
Meritor 16-1/2 x 4" Q Plus	4702	Standard	Shoe Box Kit	KIT8824HD	—	KSF787T4702QP
Meritor 16-1/2 x 4" Q Plus	4702	Standard	Single Shoe	—	—	SF787T4702QP
Meritor 16-1/2 x 7" Q Plus	4707	Standard	Shoe Box Kit	MKT4515QHD	—	KSF787T4707QP
Meritor 16-1/2 x 7" Q Plus	4707	Standard	Single Shoe	—	—	SF787T4707QP
Meritor 16-1/2 x 6" Cast Plus	4715A	.060 Oversize	Shoe Box Kit	KIT8846HD	—	KSF787T4715ACP1
Meritor 16-1/2 x 6" Cast Plus	4715A	Standard	Shoe Box Kit	KIT8846HD	—	KSF787T4715ACP
Meritor 16-1/2 x 6" Cast Plus	4715A	.060 Oversize	Single Shoe	—	—	SF787T4715ACPX
Meritor 16-1/2 x 6" Cast Plus	4715A	.120 Oversize	Single Shoe	—	—	SF787T4715ACPXX
Meritor 16-1/2 x 6" Cast Plus	4715A	Standard	Single Shoe	—	—	SF787T4715ACP
Meritor 16-1/2 x 6" Cast Plus	4715A	.060 Oversize	Two Shoes	—	—	S2F787T4715ACPX
Meritor 16-1/2 x 6" Cast Plus	4715A	.120 Oversize	Two Shoes	—	—	S2F787T4715ACPXX
Meritor 16-1/2 x 6" Cast Plus	4715A	Standard	Two Shoes	—	—	S2F787T4715ACP
Meritor 16-1/2 x 8-5/8" Cast Plus	4728	.060 Oversize	Shoe Box Kit	KIT8846HD	—	KSF787T4728CP1
Meritor 16-1/2 x 8-5/8" Cast Plus	4728	Standard	Shoe Box Kit	KIT8846HD	—	KSF787T4728CP
Meritor 16-1/2 x 8-5/8" Cast Plus	4728	.060 Oversize	Single Shoe	—	—	SF787T4728CPX
Meritor 16-1/2 x 8-5/8" Cast Plus	4728	.120 Oversize	Single Shoe	—	—	SF787T4728CPXX
Meritor 16-1/2 x 8-5/8" Cast Plus	4728	Standard	Single Shoe	—	—	SF787T4728CP
Meritor 16-1/2 x 8-5/8" Cast Plus	4728	.060 Oversize	Two Shoes	—	—	S2F787T4728CPX
Meritor 16-1/2 x 8-5/8" Cast Plus	4728	.120 Oversize	Two Shoes	—	—	S2F787T4728CPXX
Meritor 16-1/2 x 8-5/8" Cast Plus	4728	Standard	Two Shoes	—	—	S2F787T4728CP

Total Service and Support.

Meritor brake shoes and brake shoe kits for bus and coach applications are covered by a 1-Year warranty.

For complete support, visit MeritorPartsOnline.com our industry-leading online catalog, ordering and tracking system — with real-time access to complete parts information resources, including a reference library with complete technical drawings of components and systems. Or contact our highly trained customer support team — they're equipped with the product specification, warranty and service information you need. Call our Customer Care Center at 888-725-9355 (in Canada, call 800-387-3889) or visit MeritorPartsOnline.com.





Meritor Heavy Vehicle Systems, LLC
7975 Dixie Highway
Florence, Kentucky 41042 USA

888-725-9355 U.S.
800-387-3889 Canada
MeritorPartsOnline.com
meritor.com

©2013 Meritor, Inc.
Litho in USA, SP-1377
Issued 06-13 (47865/11900)

Vehicle models, brands and names depicted herein are the property of their respective owners, and are not in any way associated with Meritor, Inc., or its affiliates.